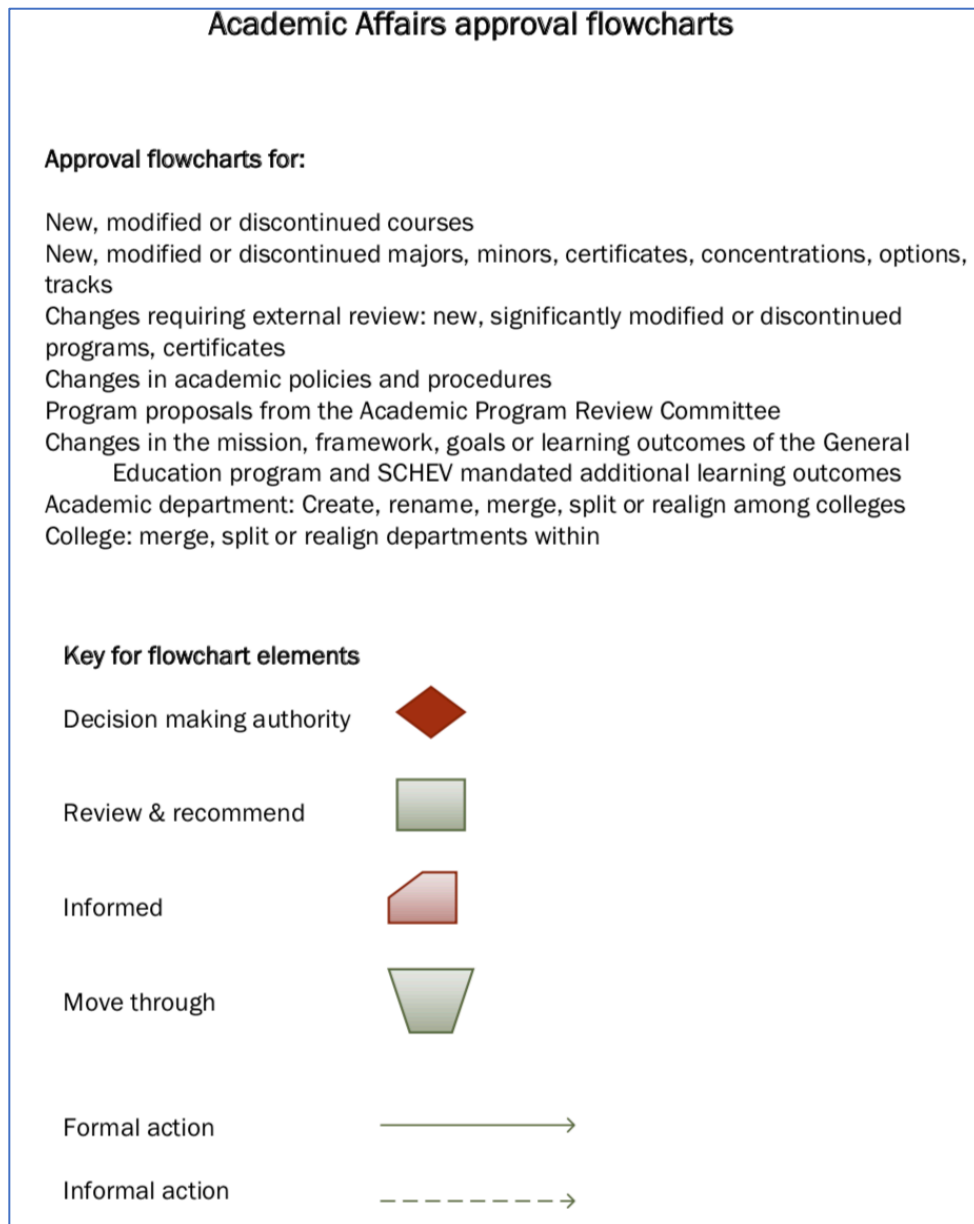


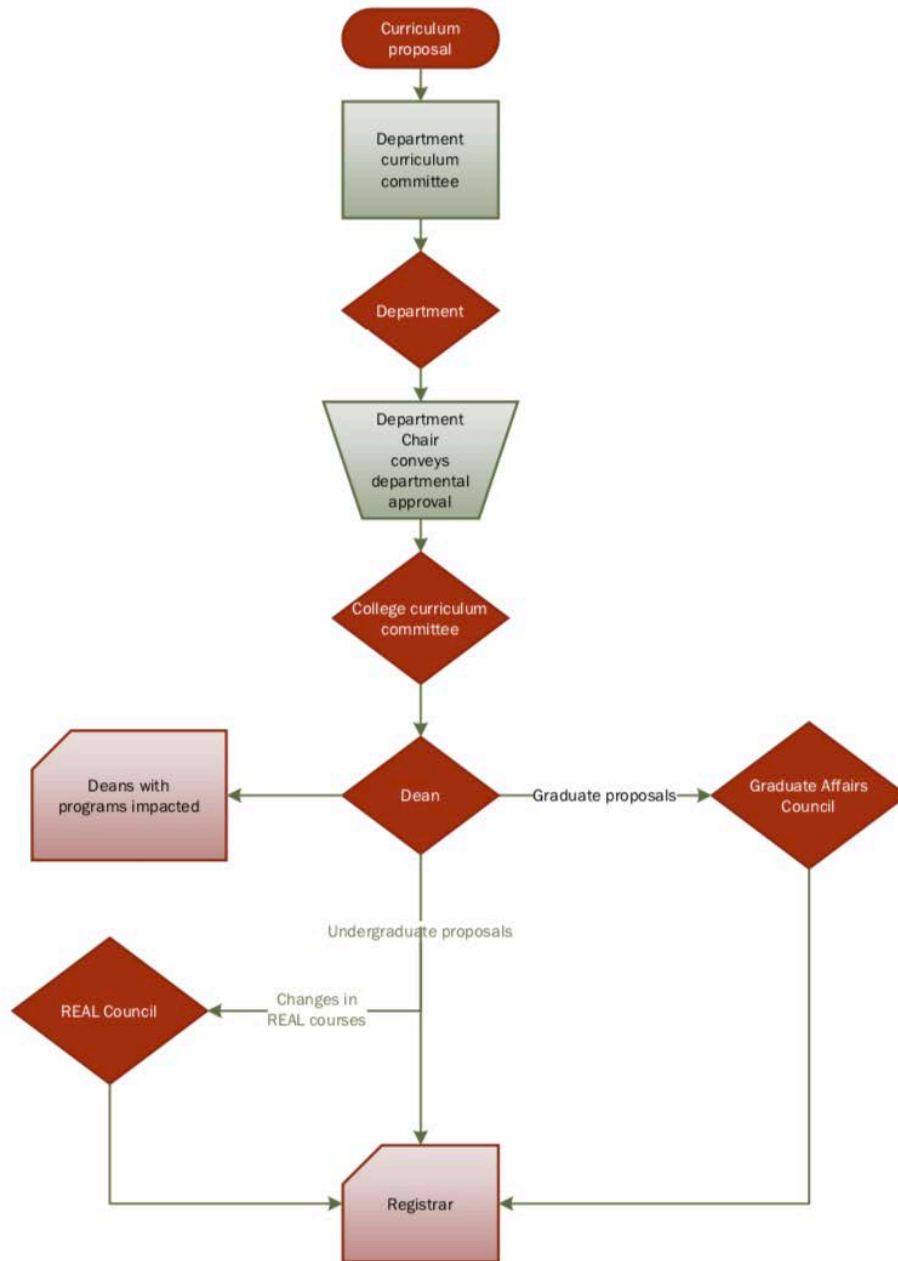
REAL Academic Pathways

The changes to the Academic Pathways related to REAL Curriculum were passed by Faculty Senate on November 7, 2019.

Below is a key for flowchart elements. Bodies with decision making authority are represented with a diamond. Whereas, bodies with review and recommending authority are represented by a rectangle.

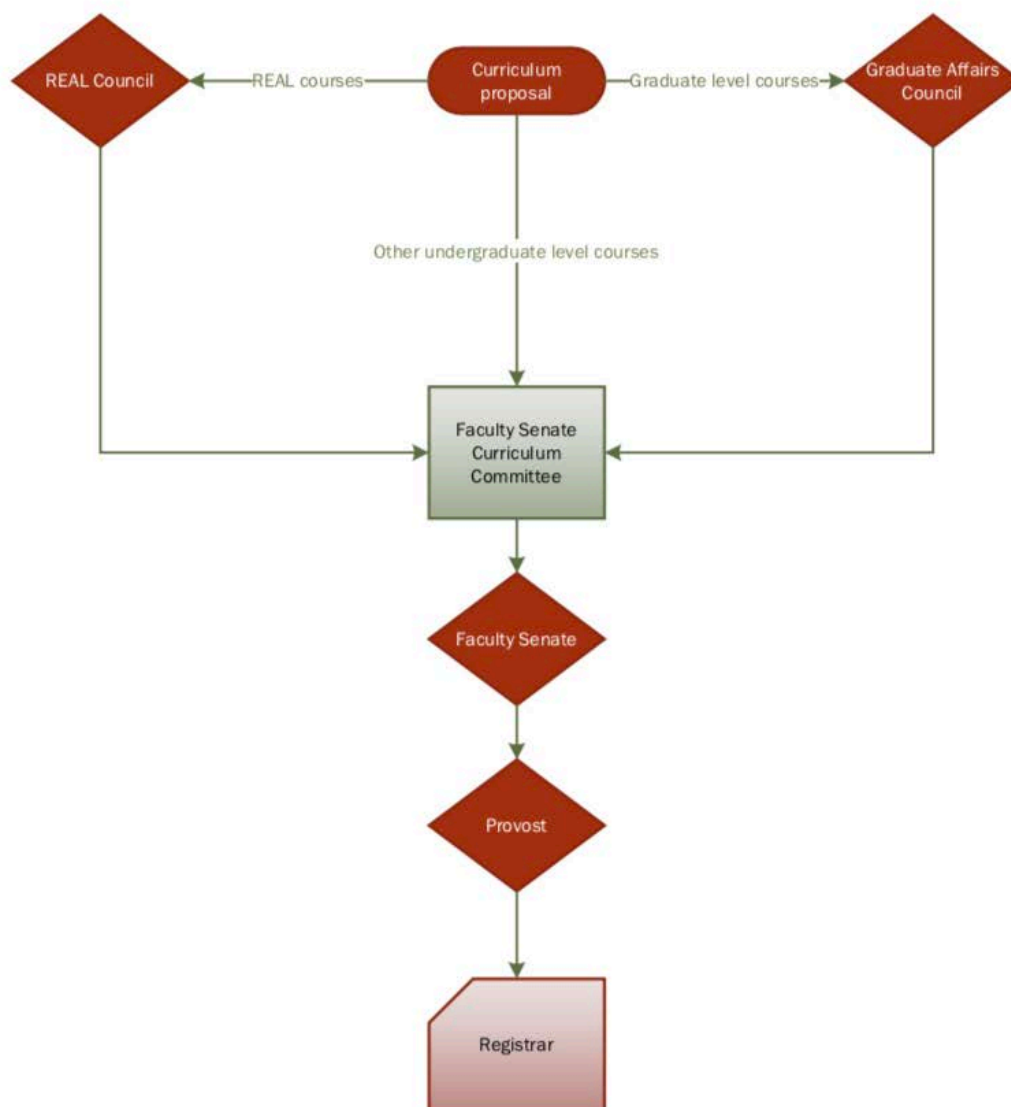


- Curriculum Pathway:** 1. New, modified, or discontinued courses
 2. Program changes (major, minors and certificates) not submitted to SCHEV

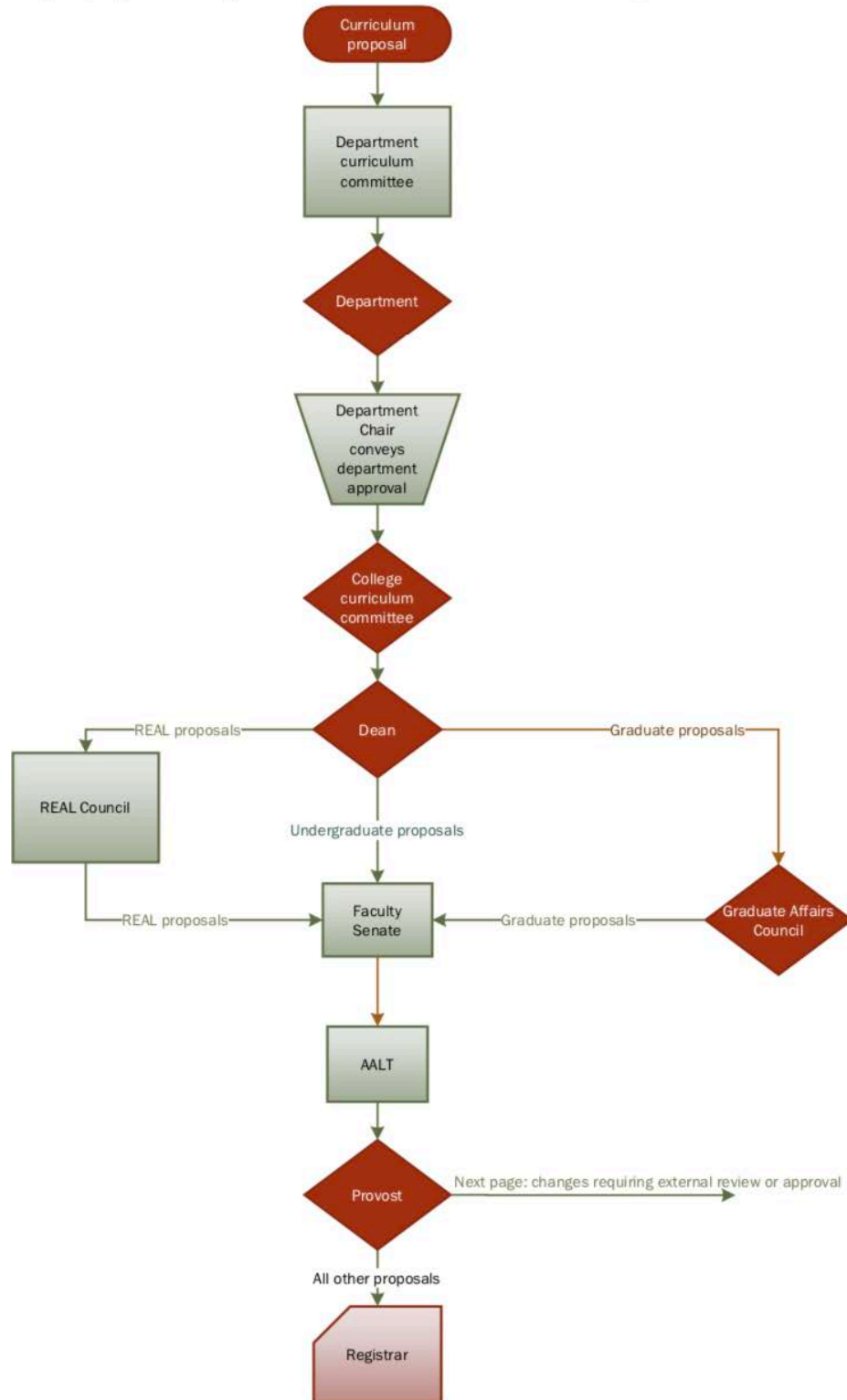


NOTE: Course designation decisions can be appealed to the Faculty Senate Curriculum Committee for recommendation to Faculty Senate, which has final approval.

Curriculum Pathway: New, modified, or discontinued courses not in a specific discipline, e.g. UNIV 100



Curriculum Pathway: New, modified or discontinued majors, minors, certificates, concentrations, options and/or program changes that must be submitted to REAL and/or SCHEV



REAL Curriculum Changes: proposals for changes in mission, framework, goals or learning outcomes, including SCHEV mandated additional learning outcomes

