

NSSLHA NEWSLETTER

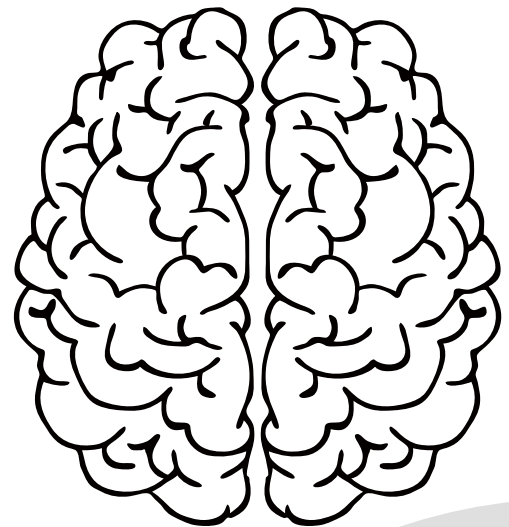
November 2022

Radford University

Alzheimer's Awareness Month

WHAT'S INSIDE THE ISSUE:

- **NSSLHA spotlight**
- **Last month's recap**
- **Crossword puzzle**
- **Announcements**



FOLLOW US

INSTA: @RADFORDNSSLHA

FACEBOOK GROUP: NSSLHA AT RADFORD UNIVERSITY

What is Alzheimer's Disease?

A brain disorder that slowly affects memory, thinking skills and the ability to carry out simple tasks

How many people live with this disease?

More than 55 million people are living with Alzheimer's or another dementia

How can you help raise awareness?

- Wear purple during November
- Thank a caregiver
- Participate in a walk to end Alzheimer's

OFFICER SPOTLIGHT

ANNA FRENCH

HI! MY NAME IS ANNA FRENCH AND I AM A JUNIOR IN THE COSD DEPARTMENT. I AM ALSO THE DIVERSITY AND INCLUSION OFFICER FOR NSSLHA. MY FUTURE CAREER GOAL IS TO BE AN AUDIOLOGIST, BUT I DON'T KNOW WHICH SETTING YET. RIGHT NOW, I WORK AS A NEWBORN HEARING SCREENER AT A HOSPITAL, AND I LOVE IT, BUT I DON'T THINK THAT'S WHERE I WILL STAY. A FUN FACT ABOUT ME IS I PLAY THE BASS CLARINET IN THE BLACKSBURG COMMUNITY BAND ON WEDNESDAY NIGHTS. MY FAVORITE THING ABOUT BEING THE DIVERSITY AND INCLUSION ROLE IS PLANNING EVENTS TO SHARE THE DIFFERENT CULTURES AND TYPES OF PEOPLE WE WILL HELP WHEN WE ARE PROFESSIONALS.



Costume Contest
Winner

October recap

NSSLHA members spent last month making memories (and messes) together



Pumpkin Painting



Orbees Stress Balls



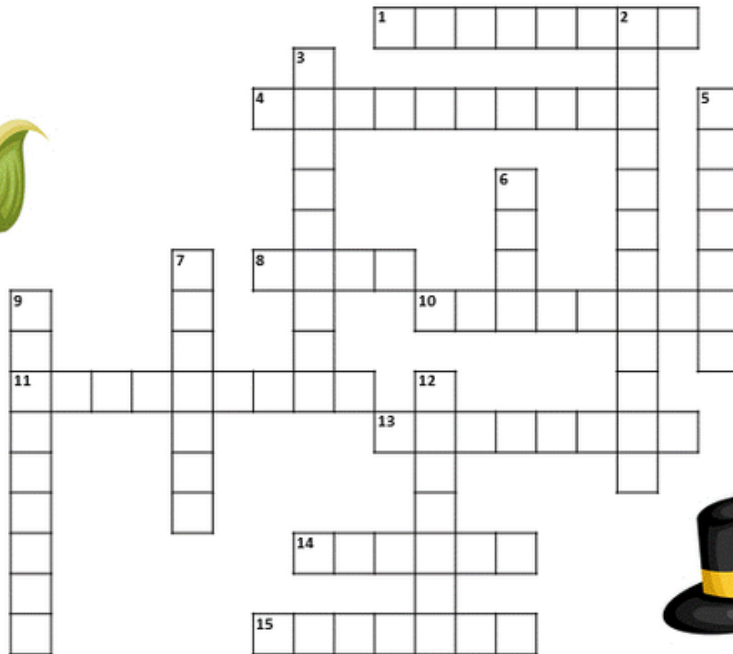


Are you ready for Thanksgiving break?



Wind down with this festive crossword puzzle!

Thanksgiving Crossword



© puzzles-to-print.com

Across

1. First village established by the Pilgrims
4. Symbol of abundance and nourishment
8. An essential grain in the New World diet
10. Literally, travelers going to a holy place
11. The Pilgrims' boat
13. 16th and 17th century English Protestants
14. The traditional holiday bird
15. Indian who taught the Pilgrims many things

Down

2. 4th Thursday of November
3. A traditional Indian dwelling
5. Gathering of crops
6. Season for harvesting
7. Country the Pilgrims left behind
9. Indian tribe that was present at the first Thanksgiving
12. Bright orange squash used to make pie





NOVEMBER

2022

Announcements



Travel SLP Panel

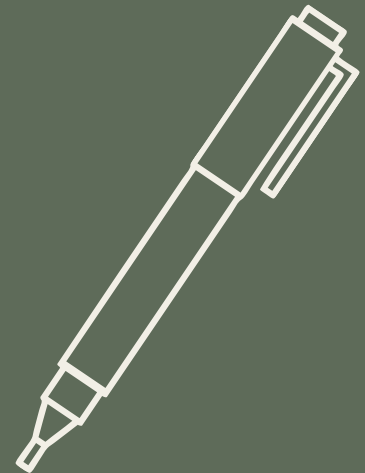
November 2nd @ 6pm

A perfect opportunity to ask professionals questions about what it is like to be a travel SLP!

General Meeting #3

November 7th @ 5pm

You must attend one meeting per semester to receive NSSLHA cords and this is the last of the semester! We will have a SHAV activity with pizza and cookies available.



Food Drive

November 7th - 14th

Information will be announced about where and what to donate during this week!



NOVEMBER

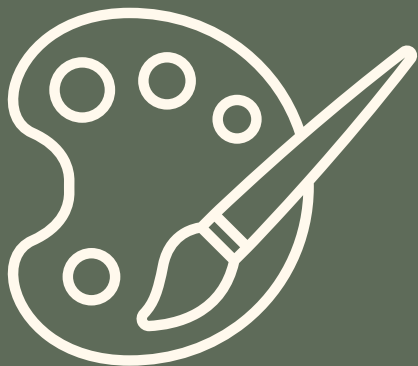
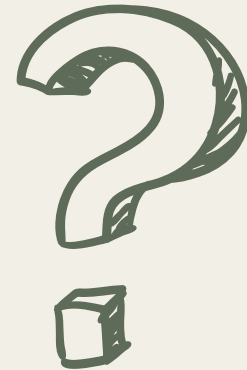
2022

Announcements

Jeopardy Night

November 9th @ 6pm

Show off your trivia skills for a chance to win prizes!



Mug Decorating

November 29th @ 6:30pm

Personalize your own mug to use at the next event or for any warm, winter drink.

Hot Chocolate Destress Night

November 30th @ 6pm

Come hangout at this student/faculty social to celebrate all of your hard work for the semester!



Keep an eye out for more information on location, details, and extra credit available