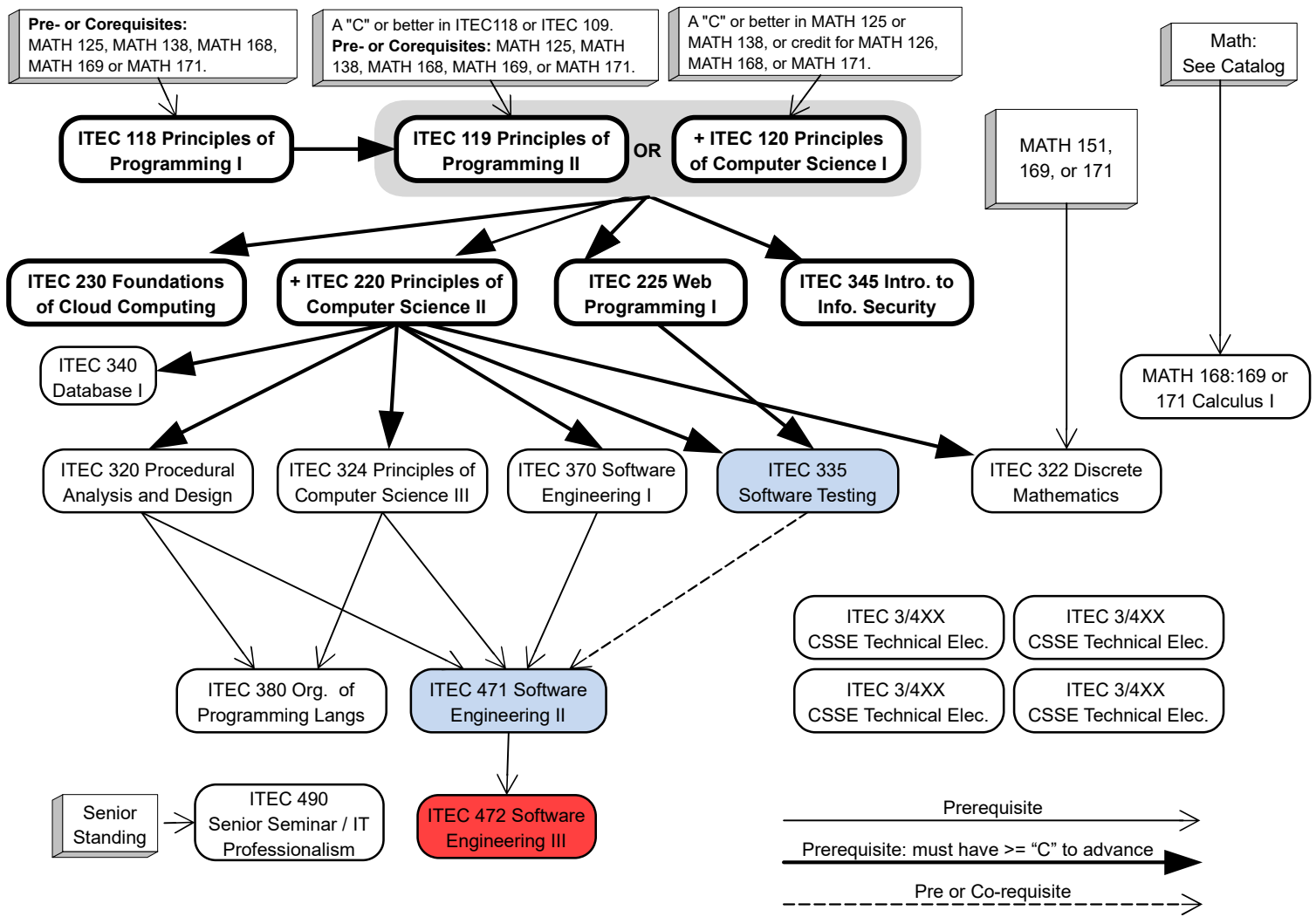


Software Engineering Concentration 2023 - 2024



Offered Only In Fall
Offered only in Spring
Fall and/or Spring offerings are expected, but not guaranteed

CSSE Technical Electives: Plus 12 additional credit hours chosen from any 300 or 400-level ITEC courses (except ITEC 301, ITEC 304, ITEC 307, ITEC 369, ITEC 381, ITEC 395, ITEC 398, ITEC 466, ITEC 493, ITEC 495, ITEC 496, ITEC 497, or ITEC 498) or any 500 or 600-level ITEC course approved by the School Director.

B.S. Requirements (6-8 credits):
 Two courses (each 3-4 hours), one of which must include a lab, chosen from: any Astronomy; any Biology (except BIOL 301:BIOL 302); any Chemistry; any Geology; any Physics.
 Courses used to meet the B.S. Requirements for a degree cannot be used to meet any other requirements for that degree.

Students with more than one concentration and/or major should evaluate each independently.

+ ITEC 120 & ITEC 220 can only be attempted twice, including Withdrawals

Courses in bold boxes must be passed with a grade of "C" or better

Major GPA Requirement: 2.0 in all ITEC, MATH, STAT courses applied to the major, excluding courses used to meet the B.S. Requirement.

REAL Curriculum: This major fulfills the R and L areas. Students must fulfill the REAL Curriculum by identifying a combination of majors, minors, and certificates that meet their educational goals that complete the R, E, A, and L areas.